

FREE

11.11.2025



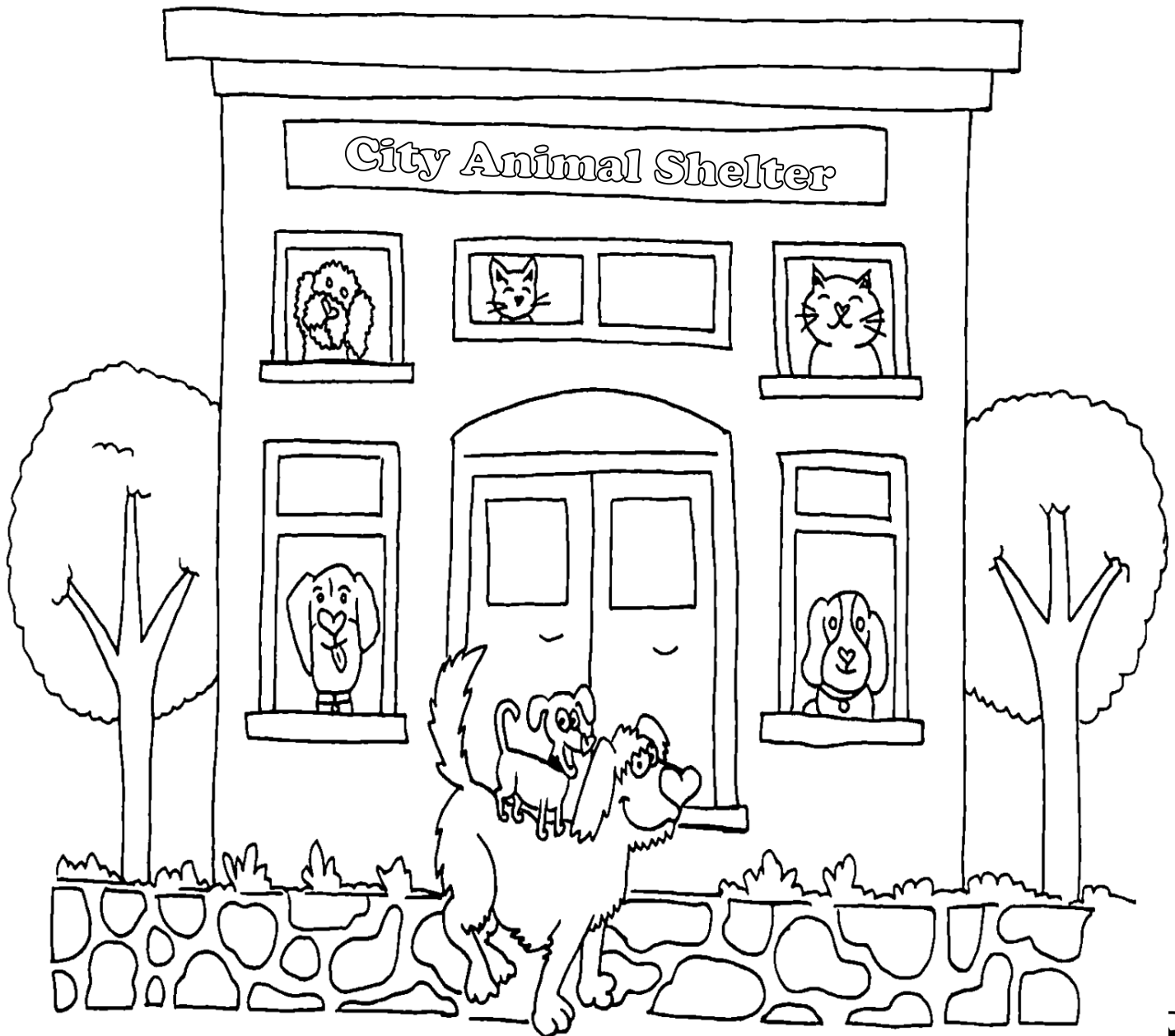
Train Loyal Companions, LLC

"Unleash Your Potential"

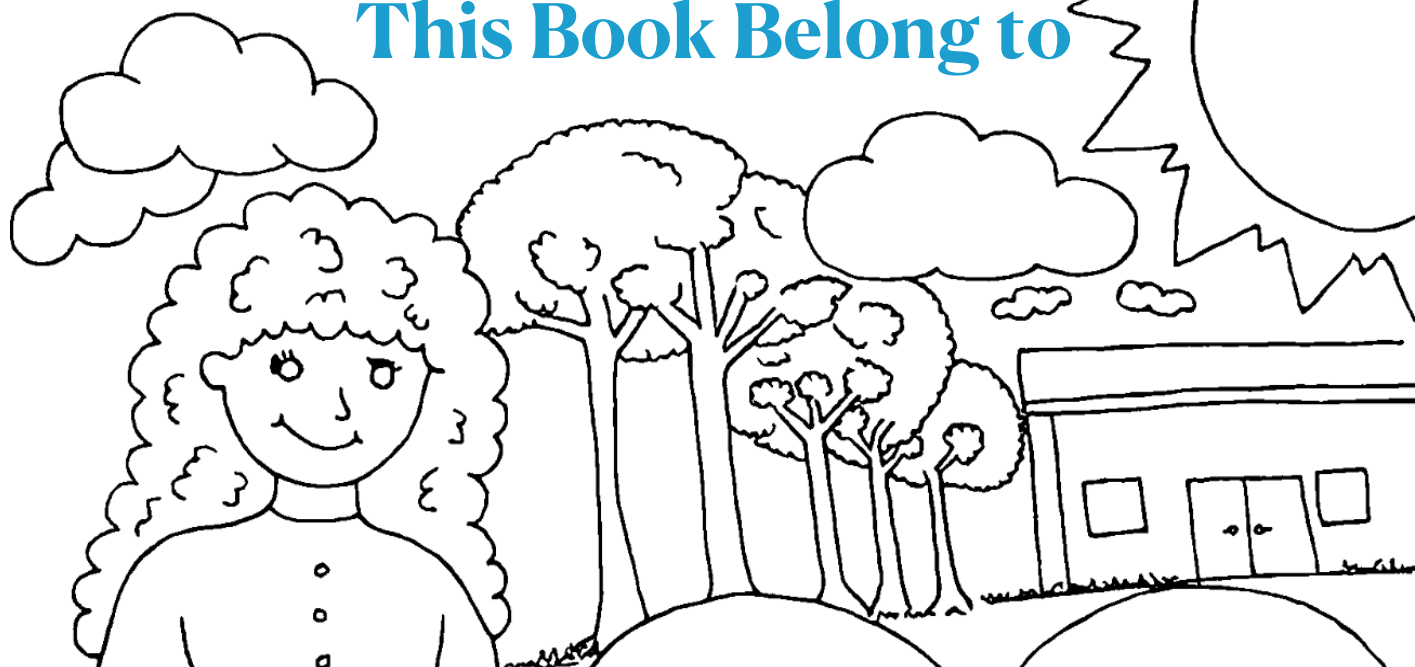
Pet Math Problems

A Humane Education Guide About Pet Overpopulation.

Written & Hand Illustrated By: Leslie Hudson, CPDT
Certified Professional Dog Trainer



This Book Belong to



My Name

My Favorite Kind of Pet is a



venmo

Donate @TrainLoyalCompanions
Your donation directly contributes to the creation, printing, and distribution of these materials, ensuring that humane education remains accessible to all.

Suggested donation >\$5

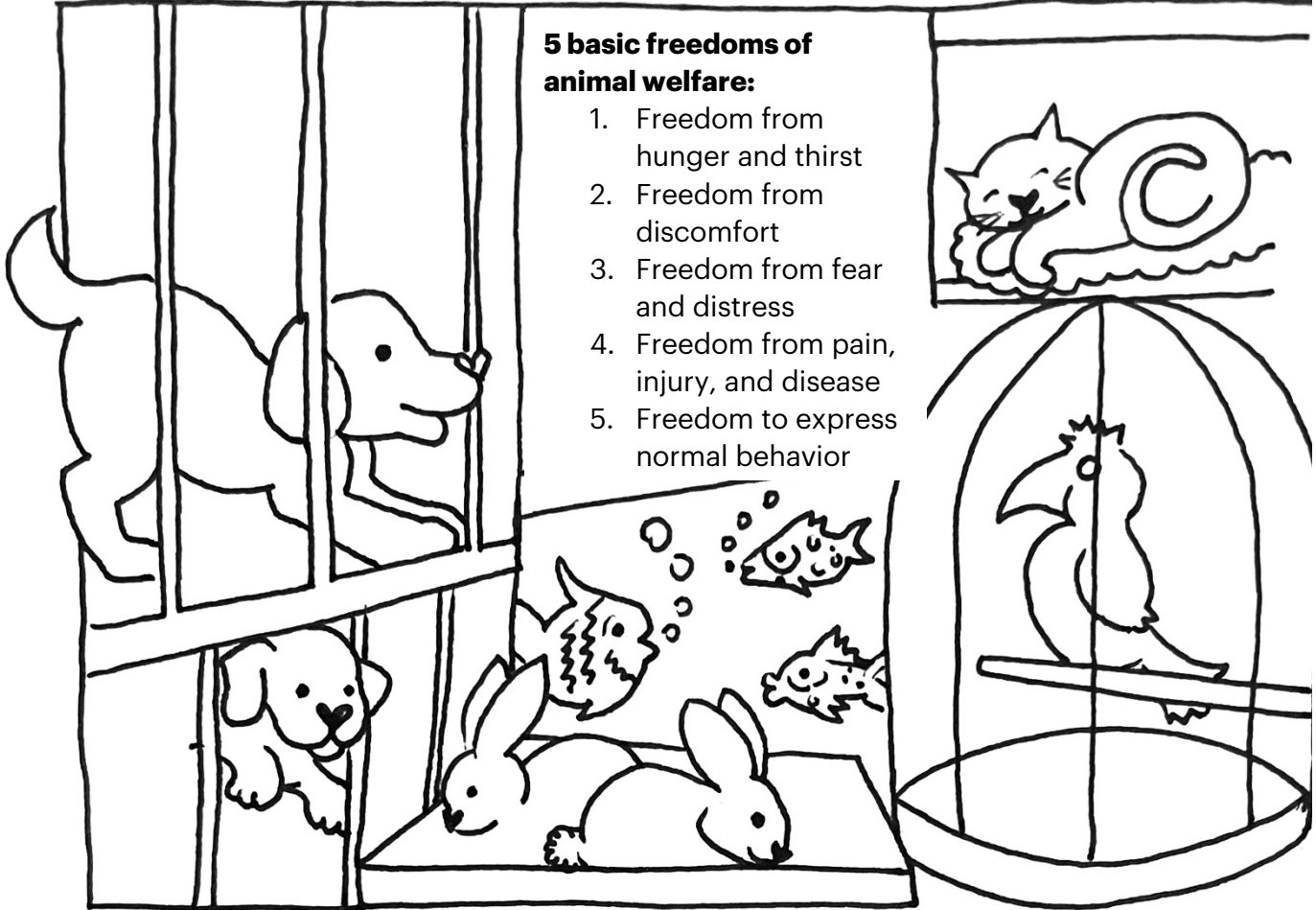
This guide is provided as a free digital resource for humane education and community outreach. It may be shared or reproduced in its original form for non-commercial, educational purposes only. It is not for resale or profit. Feel free to personalize your copy, add your own notes, drawings, or reflections to make it truly yours!

Copyright © 2025 Leslie Hudson

Cover design, illustrations, and all rights reserved by Leslie Hudson.



Adoption Center



Getting a pet is exciting. It also comes with big responsibility. Before adopting an animal, you need to have the right supplies to take care of your pet. Pretend you are getting a pet. What do you need?

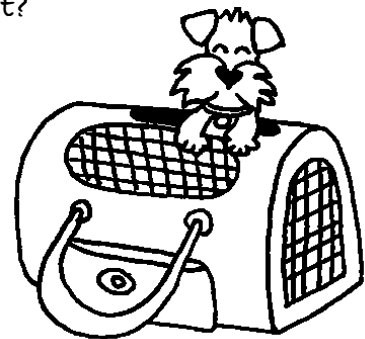
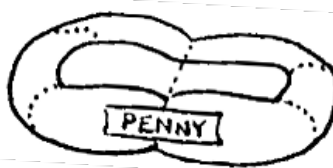
Price Your Pet's Supplies

Here is your chance to plan for your pet or your dream pet. Pretend that you are taking care of a pet for a month. Think of the supplies your pet will need. Make a list of the items you would need to take care of your pet and list the items and how much each item would cost to total up for a whole month.

Fact: On average, it costs around at least \$1,008 a year to care for a pet's basic needs like food and care.

Average monthly cost?

$\$1,008 / 12 \text{ months} =$





Pet Care Supplies & Cost



Price Your Pet's Supplies

Here is your chance to plan for your pet or your dream pet. Pretend that you are taking care of a pet for a month. Think of the supplies your pet will need. Make a list of the items you would need to take care of your pet and list the items and how much each item would cost to total up for a whole month.

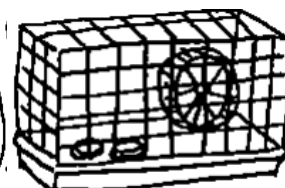
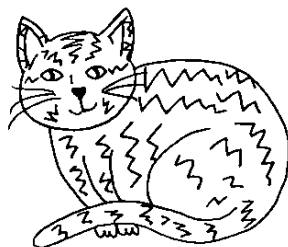
Fact: On average, it costs around at least \$1,000 a year to care for a pet's basic needs like food and care.

Common Pets

- Ant Farm
- Ball Python
- Bearded Dragon
- Betta Fish
- Bunny
- Cat
- Chicken
- Corn Snake
- Cow
- Dog
- Gerbil
- Goat
- Goldfish
- Hamster
- Hermit Crab
- Horse
- Leopard Gecko
- Mouse
- Parakeet
- Rat
- Turtle



Draw or List Your Pet Care Items

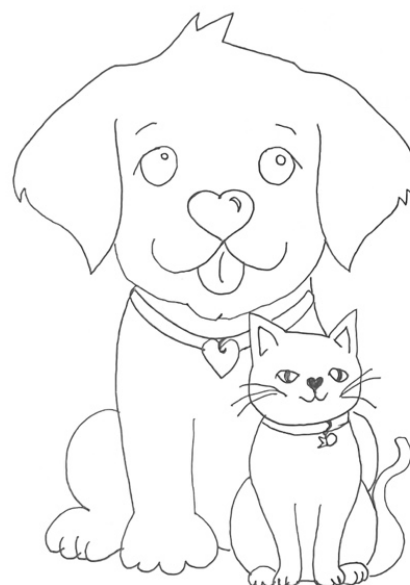


Pet Word Search

Find all the pet related words in the puzzle.

E	A	R	F	T	T	P	Y	K	B
M	V	E	E	A	U	R	E	E	U
A	E	O	C	T	A	R	S	T	N
D	I	C	L	N	S	T	T	E	N
K	G	P	A	C	F	M	A	L	Y
L	D	C	M	R	L	J	A	F	E
A	U	C	I	H	S	I	F	H	U
W	B	E	G	E	R	B	I	L	R
K	N	D	O	G	P	L	R	Z	M
D	G	I	P	A	E	N	I	U	G

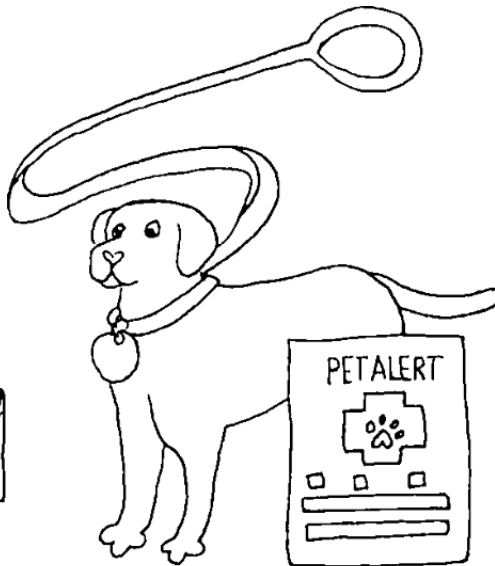
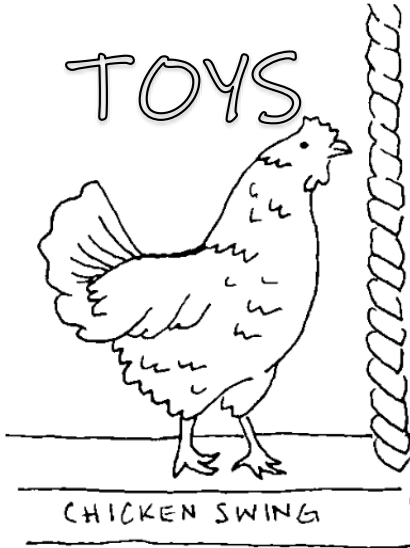
- BEST
- BUNNY
- CANARY
- CAT
- DOG
- FEED
- FISH
- FRIEND
- GERBIL
- GUINEA PIG
- HAMSTER
- LOVE
- PET
- TURTLE
- WALK



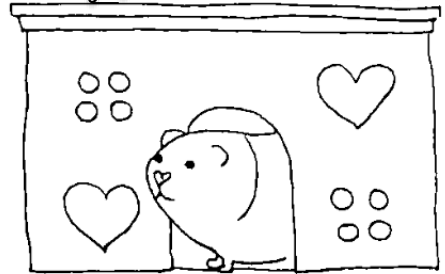
Happy & Healthy Pet Care

Being a kind and caring pet owner means helping your pet stay happy and healthy every day. This includes giving them fresh water, good food, regular exercise, and lots of love. Pets also need clean spaces, gentle handling, and visits to the vet to keep them feeling their best.

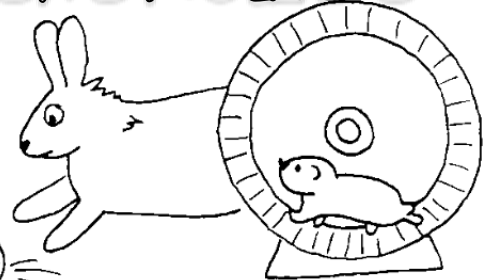
TOYS



SHELTER



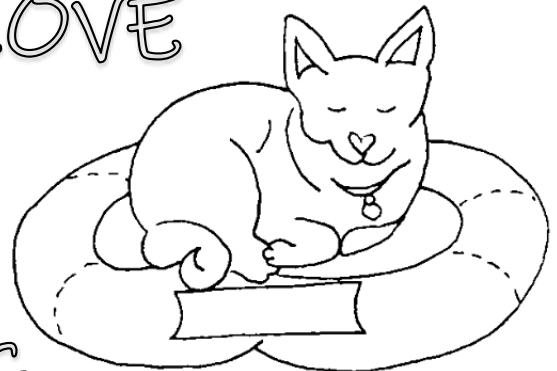
EXERCISE



SAFETY



LOVE



TRAINING

COMFORT

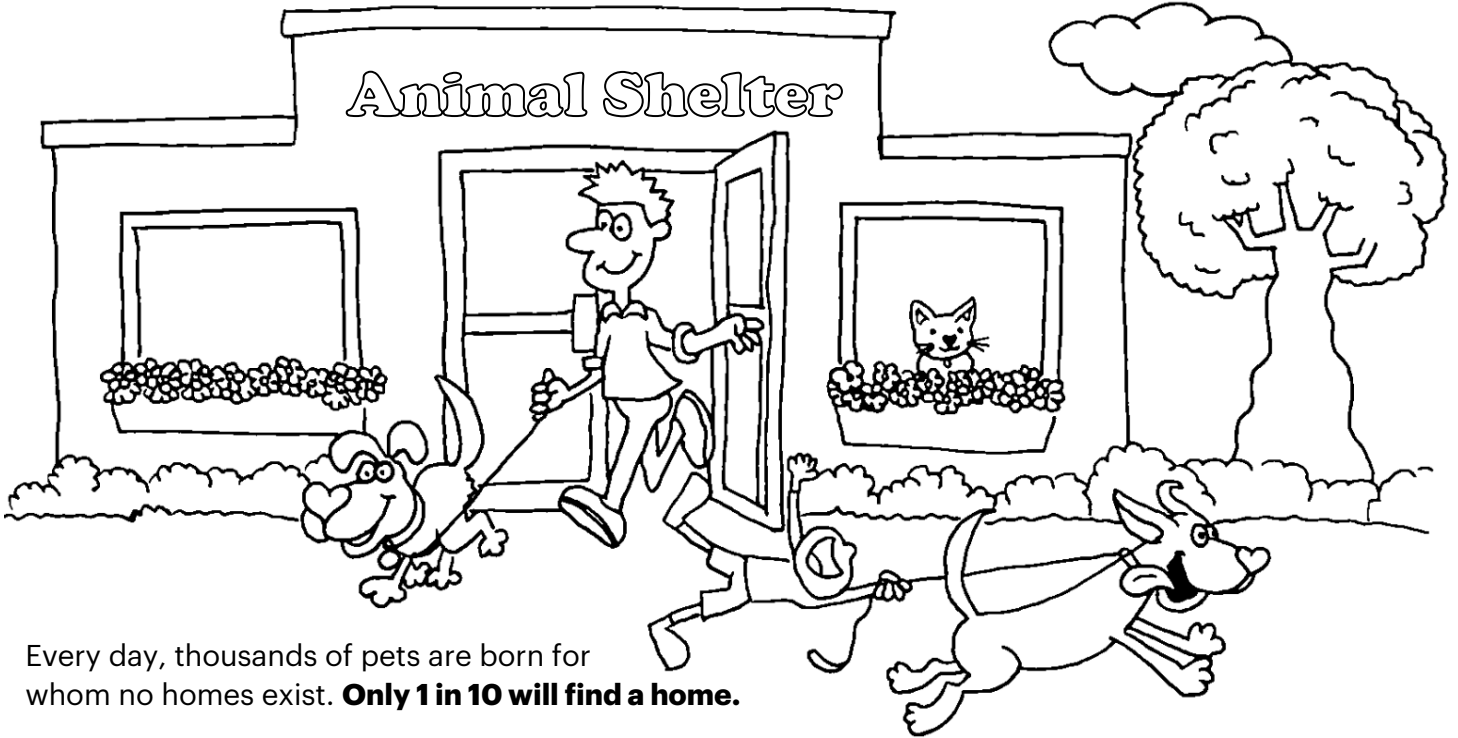
GROOMING



VET CARE



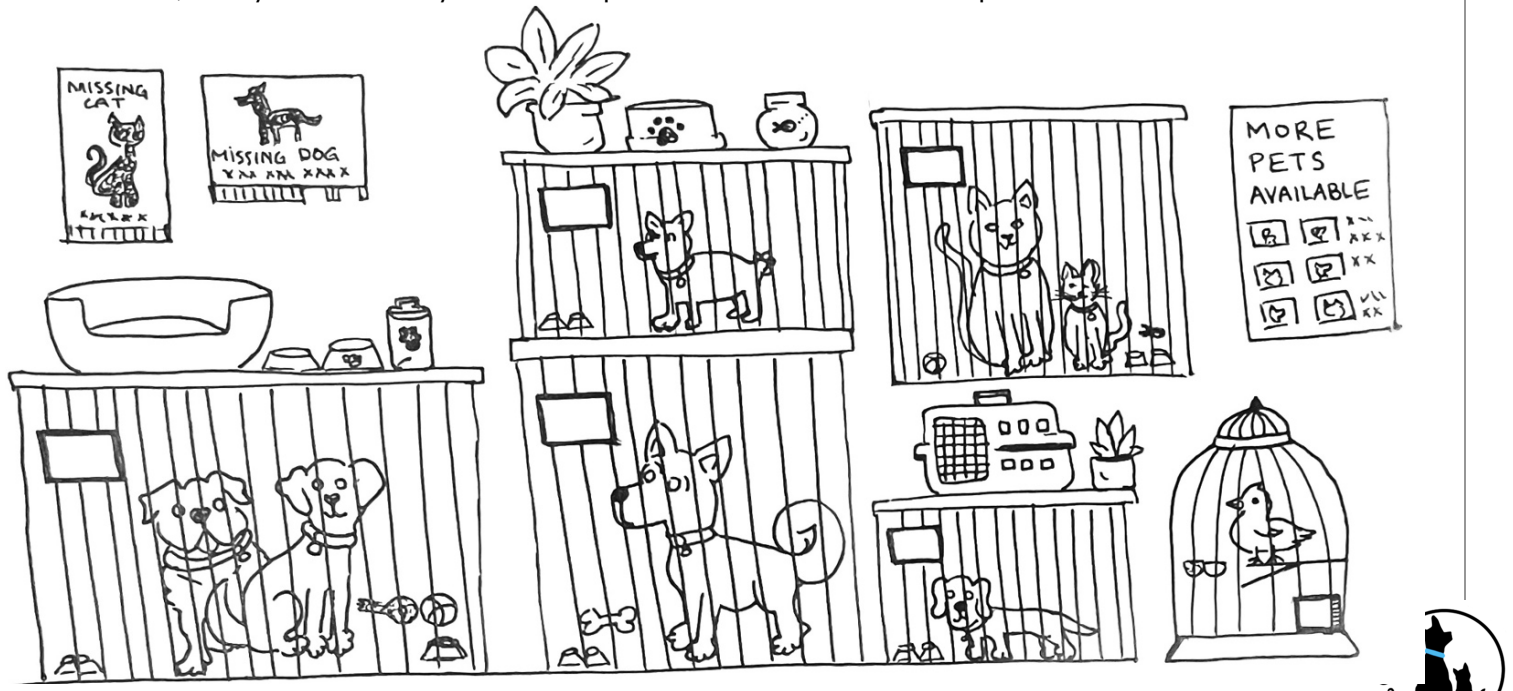
Pet Overpopulation



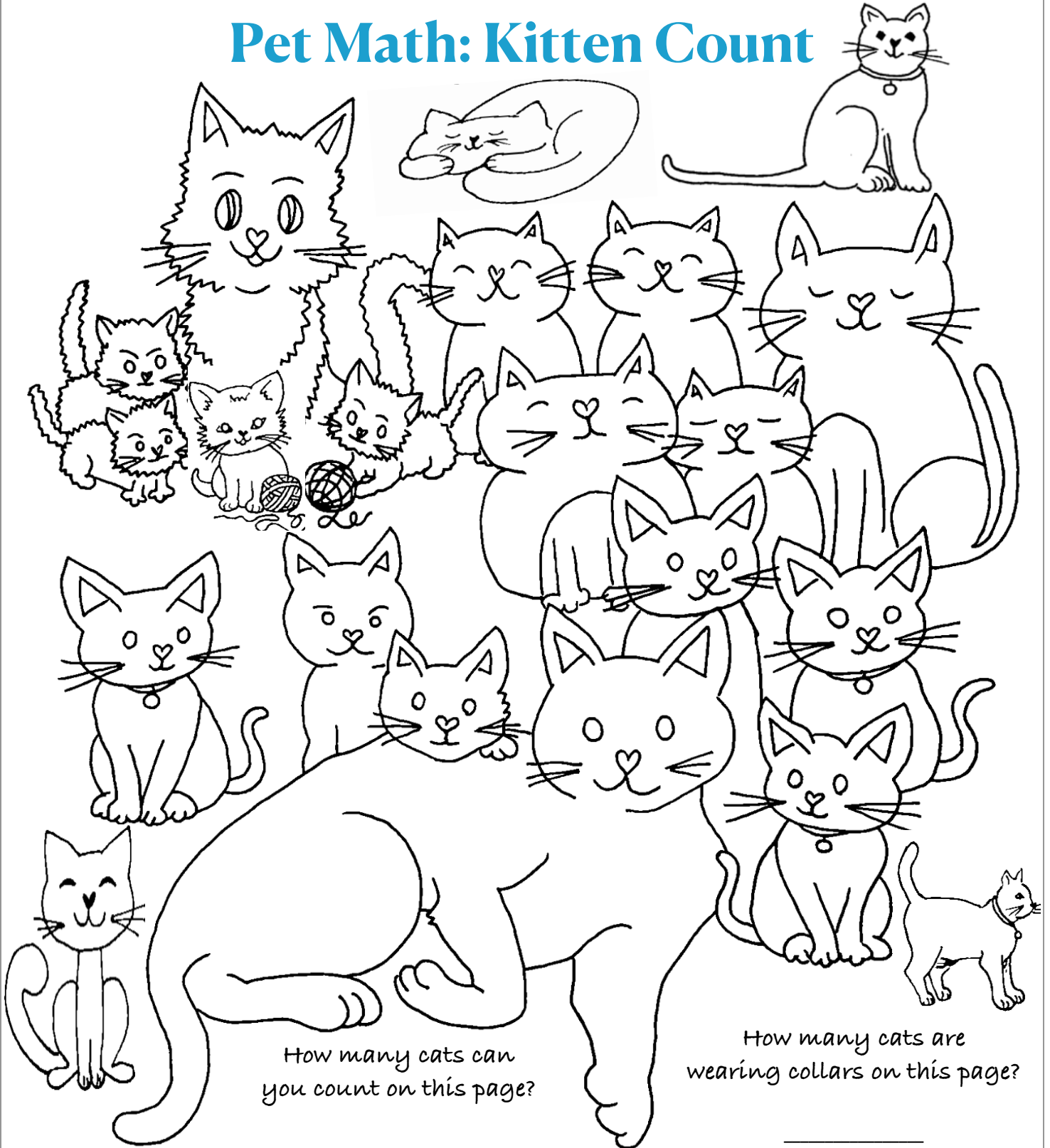
Every day, thousands of pets are born for whom no homes exist. **Only 1 in 10 will find a home.**

Pet overpopulation happens when there are too many pets and not enough homes for them. This can lead to many animals not having a family to care for them. One way to help prevent pet overpopulation is by making sure pets are spayed or neutered. This simple procedure helps control the number of animals being born, so fewer pets end up without homes. By taking this important step, you're helping to make sure every pet has a chance to be loved and cared for.

You can help prevent both pet overpopulation and lost pets by being a responsible pet owner. If we all do our part, we can make sure more pets find happy homes and stay safe with their families. Remember, every little action you take helps make the world a better place for animals!



Pet Math: Kitten Count



How many cats can you count on this page?

How many cats are wearing collars on this page?

If ten cats are adopted, how many cats are there now?

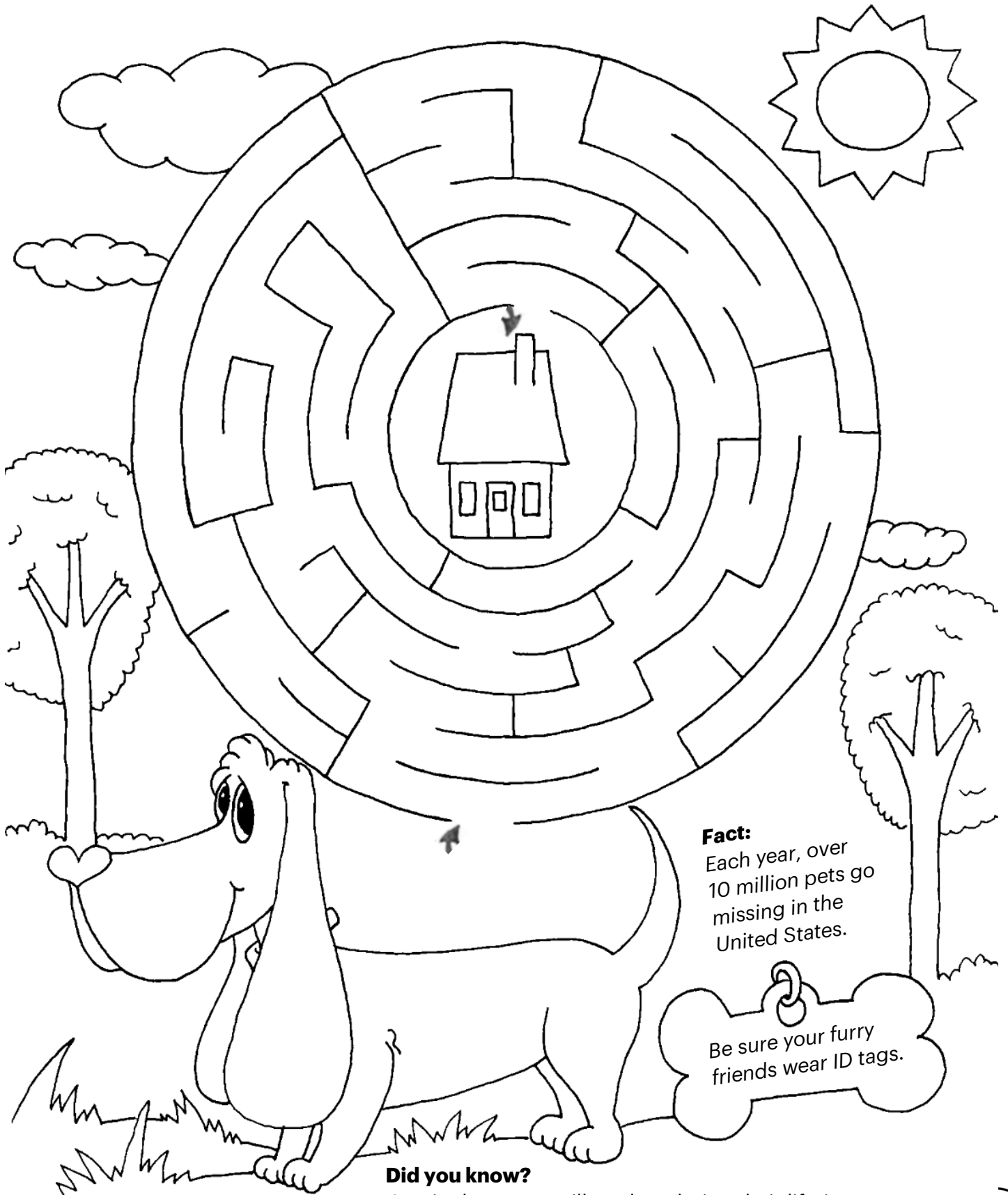
___ - ___ = ___

Fascinating Feline Facts

- Cats can jump up to six times their body length in a single leap.
- Kittens are born with blue eyes, which may change color as they grow older.
- Cats spend about 70% of their lives sleeping.



Help Lost Pets Get Home



Fact:
Each year, over 10 million pets go missing in the United States.

Be sure your furry friends wear ID tags.

Did you know?
One in three pets will get lost during their lifetime.
All pets should have a collar with ID tags and a microchip.



Pets are for Life

Are you thinking about getting a pet? Pets not only come with big responsibility but also commitment. Commitment means to provide care for your pets, feed, and play with them every day. Pets can live a long time.

Can you match the different pets to the average number of years that type of pets will live?

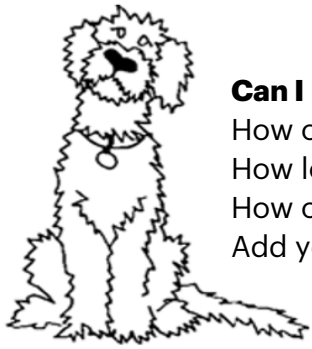


The maze contains the following elements:

- Hamster:** Years (with a hamster in a cage illustration)
- Betta:** Years (with a betta fish illustration)
- Cats:** Years (with a cat illustration)
- Guinea Pig:** Years (with a guinea pig illustration)
- Parakeet:** Years (with a parakeet in a cage illustration)
- Rabbit:** Years (with a rabbit illustration)
- Dogs:** Years (with a dog illustration)

Age range options in the center of the maze:

- 1-4 Years
- 5-8 Years
- 5-10 Years
- 6-15 Years
- 12-20 Years
- 14-22 Years



Can I Provide Proper Care Calculator

How old am I?
 How long is my pretend pet expected to live?
 How old will I be when my pretend pet is a senior or older pet?
 Add your age to the highest age of the animal for results.

My age _____ + highest age of animal _____ = _____



Are you sure you can care for your pet for as long as that pet lives? Yes or No



Too Many Pets





Review Us On  Google

